

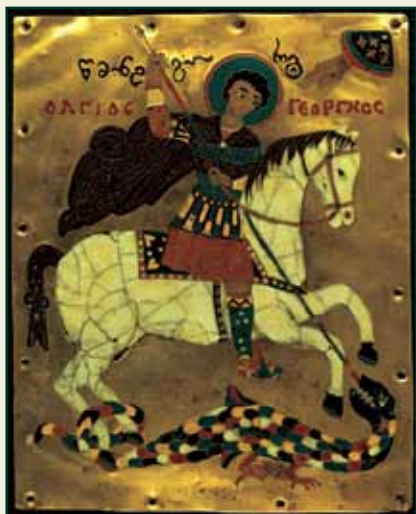


Journey to Georgia

Meet local Georgian community members,
fellow American Friends of Georgia members,
and guests from the expat community in Georgia

September 9-18, 2012

Optional Post-Tour: September 18-23, 2012





Overview Daily Itinerary: Main Tour

Days 1-2.....	Depart USA • Arrive Tbilisi <i>Meals: inflight (Betsy's Hotel)</i>
Day 3.....	Tbilisi <i>Meals: B, L, D (Betsy's Hotel)</i>
Day 4.....	Tbilisi • day trip to Mtskheta, Ananuri, Nikozi <i>Meals: B, L (Betsy's Hotel)</i>
Day 5.....	Tbilisi • day trip to Dmanisi and Bolnisi <i>Meals: B, L (Betsy's Hotel)</i>
Day 6.....	Tbilisi • Telavi <i>Meals: B, L, D (Hotel Rcheuli)</i>
Day 7.....	Telavi • day trip to the Kakheti Region <i>Meals: B, L, D (Hotel Rcheuli)</i>
Day 8.....	Telavi • Tbilisi <i>Meals: B, D (Betsy's Hotel)</i>
Day 9.....	Tbilisi <i>Meals: B, D (Betsy's Hotel)</i>
Day 10	Depart Tbilisi <i>Meals: B, inflight</i>

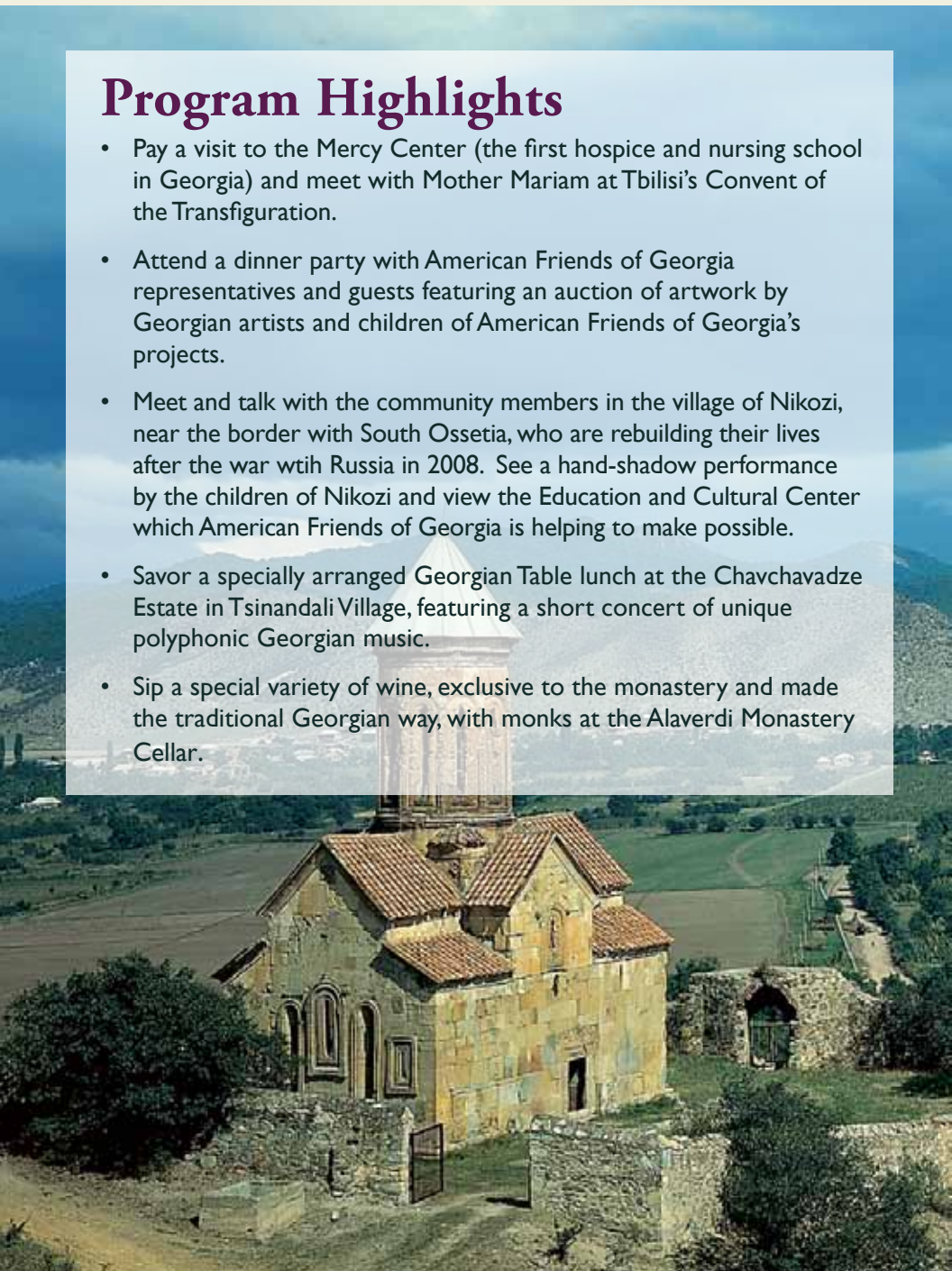
Overview Daily Itinerary: Optional Extension

Day 10	Tbilisi • Akhaltsikhe <i>Meals: B, L, D (Hotel Bonadea)</i>
Day 11	Akhaltsikhe • day trip to Akhalkalaki and Vardzia <i>Meals: B, L, D (Hotel Bonadea)</i>
Day 12	Akhaltsikhe • Batumi <i>Meals: B, L (Hotel Era Palace)</i>
Day 13	Batumi • Kutaisi <i>Meals: B, L, D (Lali's Guesthouse)</i>
Day 14	Kutaisi • Gori • Tbilisi <i>Meals: B, L, D (Betsy's Hotel)</i>
Day 15	Depart Tbilisi <i>Meals: B, inflight</i>



Program Highlights

- Pay a visit to the Mercy Center (the first hospice and nursing school in Georgia) and meet with Mother Mariam at Tbilisi's Convent of the Transfiguration.
- Attend a dinner party with American Friends of Georgia representatives and guests featuring an auction of artwork by Georgian artists and children of American Friends of Georgia's projects.
- Meet and talk with the community members in the village of Nikozi, near the border with South Ossetia, who are rebuilding their lives after the war with Russia in 2008. See a hand-shadow performance by the children of Nikozi and view the Education and Cultural Center which American Friends of Georgia is helping to make possible.
- Savor a specially arranged Georgian Table lunch at the Chavchavadze Estate in Tsinandali Village, featuring a short concert of unique polyphonic Georgian music.
- Sip a special variety of wine, exclusive to the monastery and made the traditional Georgian way, with monks at the Alaverdi Monastery Cellar.





Visit the Kakheti Region, Georgia's most important wine-growing area. The winding characters of the Georgian alphabet resemble the trailing growth of the vine, and this motif is found in Georgian architecture throughout the country.



Visit the archeological site of Dmanisi. The discovery here of four 1.7 million-year-old *Homo Erectus* skulls have made the Dmanisi site crucial to the study of human evolution. Meet with a local archaeologist to learn about the excavation.





Main Tour

Land Program Rate:.....\$2,995
(per person land tour based on double occupancy)

Single Supplement:.....\$445

Optional Post-Tour

Land Program Rate:.....\$1,745
(per person land tour based on double occupancy)

Single Supplement:.....\$295

Included: All accommodation, hotel taxes • All meals per itinerary • Arrival and departure transfers for passengers arriving/departing on scheduled start/end days • All land transportation per itinerary by private motor coach throughout the itinerary • Special cultural events and extensive sightseeing, including entrance fees • Comprehensive pre-departure packet

Not Included: Travel insurance • Roundtrip airfare from/to your home city, MIR can assist you with reservations • Passport and visa fees • Personal items such as telephone calls, alcohol, laundry, excess baggage fees • Gratuities to tour manager, guides and drivers • Single supplement

Air Arrangements: Program rates do not include international airfare. Because there are a number of flight options available, there is no group flight for this program. Information on recommended flight itinerary will be sent by our tour operator upon confirmation.

Cancellations and Refunds: Costs of cancellation if received: 91 or more days before departure, deposit paid or due in full of \$500 per person; 61 days to 90 days before departure, 50% of land tour cost per person; 60 days or less before departure, no refund. All cancellations must be made in writing to MIR Corporation and are effective upon our receipt of your written notification.

Responsibility: A detailed statement of limitations and exclusions of liability of American Friends of Georgia and the Tour Operator for loss of property, injury, illness or death will be provided to passengers upon enrollment and is available to prospective travelers upon request. A signed release of liability/ assumption of risk agreement is required for trip participation.



**For a detailed itinerary
or more information
on this program, please
call Anne at MIR
Corporation at (206)
696-7054 or email
anet@mircorp.com.**

Please mail the completed registration form with deposit check (\$500 per person, payable to MIR Corporation-Trust) to MIR Corporation, 85 South Washington St, Suite 210, Seattle, WA 98104 or call MIR Corporation at 800-424-7289. You may also fax your reservation to: 206-624-7360. Balance of payment for all land and air costs is due by July 26, 2012, 90 days prior to departure. Payment of balance due is by check or wire transfer only. Reservations will be processed in order of receipt, subject to availability.

The enclosed non-refundable deposit of \$ _____ (\$500 per person) to hold _____ place(s).

☐ Enclosed check, payable to MIR Corporation-Trust ☐ Visa ☐ Mastercard ☐ American Express ☐ Discover

Credit card number _____

Exp date _____

Signature of cardholder _____

Full name #1 (as listed on passport) _____

Date of birth _____

Full name #2 (as listed on passport) _____

Date of birth _____

Mailing address (no PO boxes please) _____

City _____

State _____

Zip _____

Phone (Home) _____

(Work) _____

Email _____

Please note preferences:

☐ I am traveling alone and prefer a single room wherever available at the single supplement rate (\$445).

☐ I will share accommodations with _____

☐ I would like to share with a ☐ Non-smoker ☐ Smoker (shares are not guaranteed)

☐ I/We would like to sign up for the post-tour extension (September 18-23, 2012)

International and U.S. domestic airfare is not included in the tour price. Roundtrip economy class airfare from New York JFK is approximately \$962 round trip as of May 2012. Please send me a recommended air itinerary and fare estimate between _____ and Tbilisi in ☐ Business class ☐ Economy class

To register, please call MIR Corporation at 206-696-7054 or email annet@mircorp.com.



American Friends of Georgia
P.O. Box 1200
Truro, MA 02666